



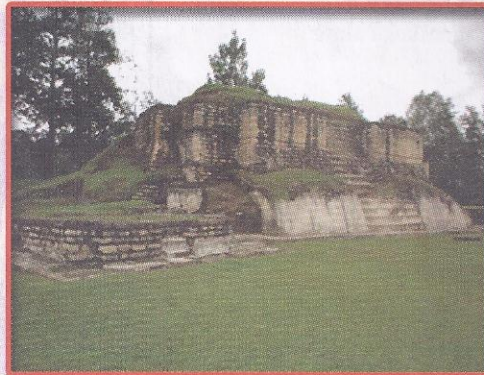
# KAQCHI' WUJ



ROX RUKAK' AL KAQCHI' WUJ

## iKaqchikel ri qaxe'el, e Kaqchikela' ri qajotay!

Richin jantape' nqak'asb'a' ri qab'anob'al chuqa' ri qach'ab'äl, k'atzinel chi ngetamaj jeb'el rutz'ib'axik ri qach'ab'äl, tiqakotz'ijaj rik'in pach'un taq tzij, tiqasolo' rij ri etamab'al, ri cholq'ij chuqa' ri ajilanik, itiqokisaj xab'a akuchi ri qach'ab'äl!



Kab'lajuj B'aqtun  
B'elejlajuj K'atun

Kajlajuj Tun  
Oxlajuj Winäq

Julajuj Q'ij  
Oxlajuj No'j

Xel Rox Rukak'al Kaqchi' Wuj



**K'AMÖL TAQ B'EY PA KAQCHIKEL CHOLCHI'**  
Junta Directiva de la Comunidad Lingüística Kaqchikel

**NAB'EY K'AMÖL B'EY:** Cecilio Tuyú Sucuc  
**RUKA'N K'AMÖL B'EY:** Narciso Cojti Macario  
**AJTZ'IB':** Guillermo Rodríguez Guaján  
**AJPWAQ:** Pedro Iboy Chiroy  
**NAB'EY TO'ONEL:** José Mucía Batz  
**RUKA'N TO'ONEL:** Herlinda Poyón  
**ROX TO'ONEL:** Roberto Tubac

**XENUK'UN CHUQA' XENIK'ON  
RUPAM RI KAQCHI' WUJ**

Ana María Chonay Chonay  
 Rosalbina Sisimit Peren  
 Lu' Pedro Morejón Patzán  
 Pablo Chex Curuchich  
 Carlos Emilio Guarcax Gonzalez

**K'AMÖL B'EY SAMAJ**  
Cecilio Tuyú Sucuc

**KAQCHIKEL CHOLCHI'**

Comunidad Lingüística Kaqchikel  
 6ta. Ave. 3-28 zona 4, la Joya Chimaltenango  
 Telefax: 7839-6577 7839-4147  
 Correo electrónico: kaqchikel@almg.org.gt

∥ B'aqtun, ∥∥ K'atun, | Tun, : Winäq, ∥∥ Q'ij, : No'j  
 Kaqulew, marzo de 2008

**NAB'EY TAQ TZIJ**

Utziläj taq etamab'äl kiya'on kan ri qati't qamama', säq kiwi' saq kijolom, xetikir xkinük' rub'eyal ri ajilanik, chuqa' xkinük' jun tz'aqät cholq'ij. Richin k'a xtiwachin xtikotz'ijan ri kina'oj ketamab'al ri qati't qamama'; k'atzinel nqichinaj chuqa' nqasamajij pa rub'eyal re taq etamab'äl re', jun sipanik ri janila rejqalem pa qak'aslem. Ri Kaqchikel Cholchi' jun ruq'a' ri K'ulb'il Yol Twitz Paxil nusuj apo ri Rox rukak'al Kaqchi' wuj, akuchi k'a k'o wi jalajöj taq etamab'äl, na'oj chuqa' rusijal ri qach'ab'äl. ri nqajowaj chi re jun qataluwuj re' xtikokisaj ta ri ak'wala', alab'oni', xtani', nimawinaqi' pa taq tijob'äl.

Chupam k'a re qawuj k'o etamab'äl pa ruwi' rutz'ib'axik ri qach'ab'äl, etamab'äl pa ruwi' ri Maya' ajilanik, na'oj pa ruwi' rokisaxik ri maya' aq'omanik, k'o rutzijol pa ruwi' ri nimaläj taq q'ij ri k'o chupam ri qacholq'ij, achi'el ri K'ak'a juna', ri Tz'apiq'ij chuqa' runataxik ri kiq'ij ri ajpopi' Kaji' Imox chuqa' ri b'eleje' k'at; k'o pach'un taq tzij, q'olaj chuqa' tawila' ruwäch kisamaj tijoxela' chuqa' tijonela' ri kiya'on ruchuqa' ri qach'ab'äl, pa ruk'isb'äl k'o jun tzijonem pa ruwi' ri tijonik pa ka'i' ch'ab'äl jalajöj b'anob'äl, xa xe k'a ke re' xtijotayin xtikotz'ijan ri qatzij ri qana'oj.

Pa qaq'a' k'o wi ruchajixik chuqa' rusamajixik ri kaqchikel b'anob'äl, kaqchikel ch'ab'äl.

∥Kaqchikel ri qaxe'el, e kaqchikela' ri qajotay!

**RUCHOLAJEM RUPAM KAQCHI' WUJ**

<b>Maya' Tijonik</b>			
Rokisaxik ri b'anoj pa jalajöj ruq'ijul.....	∴	Nuq'opoj.....	∴
Ri k'exb'i'aj.....	∴∴	Nimaläj jäb'.....	∴
Maya' Ajilab'äl.....	∴	Ri q'opoj.....	∴
<b>Maya' banob'äl</b>		Nimaläj ya'.....	∴
Ri Aq'omanik pa Maya' Na'oj.....	∴	Nute'.....	∴
Kiq'ajarik ri q'ij pa maya' cholq'ij.....	∴∴	Tataqej nutzij.....	∴
<b>Rusijal ri qach'ab'äl</b> (pach'un taq tzij)		Q'olaj - Tawila'.....	∴∴
Kikotemal pa ruq'ijul ri qach'ab'äl .....	∴	<b>Rutzijol</b>	
Ri ach'alalri'il.....	∴	Ri tijonik pa ka'i' ch'ab'äl.....	∴
Qati't Ik'.....	∴	Ruwäch ri qasamaj.....	∴





# ROKISAXIK RI B'ANOJ PA JALAJÖJ RUQ'IJUL

*Xtz'ib'an: Ma Warkax*

*Aj Tz'olojya'*

Janila k'iy tzij ri k'o pa qach'ab'äl, toq yojtzijon kan k'o jun rucholaj, k'o rub'eyal yojtzijon, man nqaxolola' ta rupam ri qatzij, ronojel nuk'ül pa qajolom, ri qate' qatata' man xkik'üt chi qawäch achi'el nk'ut wakami pa taq tijob'äl, rije' xkik'üt chupam ri qak'aslem, wakami k'a nqasol apo rub'eyal nqapach'uj chuqa' nqatz'ib'aj ri qach'ab'äl.

Chupam re jun peraj tijonik re' xtiqetamaj rupach'uxik chuqa' rutzib'axik ri b'anoj pa jalajöj ruq'ijul, chupam runuk'ulem pa rub'eyal rutz'ib'axik ri Kaqchikel Ch'ab'äl ke re' nusol chi qawäch:

**RI B'ANOJ:** Ja ri' ri silonem, ronojel ri nb'anatäj ri nk'ulwachitäj, richin k'a rupach'uxik ri b'anoj k'atzinel ri xil taq tzij, achi'el ri **Q'ijul, b'anikilal** (Tiempo, aspecto, modo), k'atzinel ri **Winaqil chuqa' ri ajilal winaqil** (número y persona gramatical), ke k'a chuqa' ri' ri **Ruxe'el ri b'anoj**. (Raiz verbal)

Ka'i' k'a kiwäch rub'eyal ri b'anoj, k'o ri **Jub'anoj**, ja ri' xa jun winaqilal k'o chupam, ri **Kab'anoj** jun winaqilal nb'ano k'o jun nk'ulu richin.

## RUQ'IJUL RI B'ANOJ:

### Q'IJUL KAN:

Nub'ij chi k'o jun b'anoj ri xk'ulwachitäj yan, ri xtz'aqät yan rub'anik, richin nqaya' retal ri ruq'ijul kan nqatz'ib'aj ri xil tzij **x-**, k'a ri' ri Winaqil pa ruk'isb'al ri ruxe'el ri b'anoj, xa jun tzij nub'an man nqach'är ta. Tz'etb'äl: **xinel, xetz'an, xojwa'**.

### Q'IJUL WAKAMI:

Nub'ij chi qe chi k'o jun b'anoj najin nk'ulwachitäj, man tz'aqät ta, richin nqaya' retal ri ruq'ijul wakami nqatz'ib'aj ri xil tzij **n-** chuqa' **y-**, xa xe' nqokisaj ri n rik'in ri rox juwinaqil (3p/s), ri y kik'in ri ch'aqa chik winaqil. Man jub'ey yeqach'är ri ta. Tz'etb'äl: **yinel, netz'an, yojwa'**.

### Q'IJUL APO:

Rupach'uxik jun b'anoj ri xtik'ulwachitäj apo, ri majani nib'an, ri xtib'an apo, richin nqaya' retal ruq'ijul apo nqatz'ib'aj ri xil tzij re': **xt-** chuqa' ri **xk-**, nqatz'ib'aj ri xt pa ri rox juwinaqil (3p/s), ri **xk-** nqatz'ib'aj kik'in ri ch'aqa chik winaqil. Jantape' xa jun tzij nub'an ri q'ijul, winaqil chuqa' ruxe'el ri b'anoj. Tz'etb'äl: **xkinel, xtetz'an, xkojwär**

### KE RE' RUSOLIK NNUK'ÜL RI B'ANOJ

Ajilal Winaqil	Xil tzij Q'IJUL KAN	Xil tzij Q'IJUL WAKAMI	Xil tzij Q'IJUL APO	Winaqil	Ruxe'el ri b'anoj	Toq nqatz'ib'aj, xa jun tzij nub'an
Nab'ey juwinaqil	<b>x-</b>	<b>y-</b>	<b>Xk-</b>	<b>-in/i-</b>	<b>-wär</b>	xiwär
Ruka'n juwinaqil	<b>x-</b>	<b>y-</b>	<b>Xk-</b>	<b>-at/i-</b>	<b>-el</b>	yatel
Rox juwinaqil	<b>x-</b>	<b>n-</b>	<b>Xt-</b>	<b>-θ-</b>	<b>-atin</b>	xtatin
Nab'ey k'iwinaqil	<b>x-</b>	<b>y-</b>	<b>Xk-</b>	<b>-oj-</b>	<b>-wa'</b>	Xojwa'
Ruka'n k'iwinaqil	<b>x-</b>	<b>y-</b>	<b>Xk-</b>	<b>-ix-</b>	<b>-etz'an</b>	Yixwa'
Rox k'iwinaqil	<b>x-</b>	<b>y-</b>	<b>Xk-</b>	<b>-e-</b>	<b>-wär</b>	Xkewär





### Samaj:

Ke'atz'eta' ri taq wachib'äl, k'a ri' tatz'ib'aj achike b'anoj, k'a ri' ke'apach'uj pa jalajöj ruq'ijul, tak'waj rucholaj ri ajil winaqil.



Q'IJUL KAN

Q'IJUL WAKAMI

Q'IJUL APO

_____	_____	_____
_____	_____	_____
_____	_____	_____
_____	_____	_____
_____	_____	_____
_____	_____	_____

_____	_____	_____
_____	_____	_____
_____	_____	_____
_____	_____	_____
_____	_____	_____
_____	_____	_____



_____	_____	_____
_____	_____	_____
_____	_____	_____
_____	_____	_____
_____	_____	_____
_____	_____	_____

### K'EXB'I'AJ.

Xtz'ib'an: Ana María Chonay Chonay  
Aj Polo'

Ri kikosaxik re jalajöj taq k'exb'i'aj re' richin nuya' retal jun winäq.

Ri toq nqokisaj man k'atzinel ta chik niqab'ij ri rub'i' ri winäq re k'exb'i'aj e k'o waqi'; e oxi' pa juwinaqil, e oxi' pa k'iwinaqil, ke re' rutz'ib'axik nusol ri chi qawäch ri "Nuk'ulem pa rub'eyal rutz'ib'axik ri Kaqchikel Ch'ab'äl".

Pa qach'ab'äl

pa kaxlan

Rin  
Rat  
Rija'  
Röj  
Rix  
Rije'

yo  
tú/usted  
él/ella  
nosotros  
ustedes  
ellos/ellas

Tatz'eta' chuqa' tasik'ij richin niq'ax pa awi' ri kikosaxik ri k'exeb'i'aj pa jun b'ab'.

Rija jun q'olonel winäq.  
Ja rat xab'ano richin.  
Kaqchikela' qab'i' röj.  
rija' utziläj chi winäq.  
Rije' yekik'ül kan ri samajib'äl.









# MAYA' AJILAB'ÄL

Xtz'ib'an: Cecilio Tuyuc Sucúc

Aj Chi Xot.

Ja ri' ri xkinuk' kan ri qati't qamama', janipe' la k'a juna' tikinuk' kan chi qawäch, xa xe qäs k'a rik'a'tz pa qak'aslem. Ruxe'el ri ajilab'äl re' ja ri k'al, ruma k'a ri' töq k'o rujalon ri' rik'in ri kaxlan, ruma ri kaxlan lajuj ri ruxe'el.

Richin rutz'ib'axik ri maya' ajilab'äl oxi' tz'ib' nawokisaj, ja ka' richin rutz'ib'axik ri kaxlan ajilab'äl k'o chi nakusaj lajuj tz'ib'. Ri juk'al nuxim ri' rik'in ri lajuj ruwi' qaq'a' chuqa' ri qaqän, nuxim k'a ri' chuqa' rik'in ri juk'al q'ij e k'o pa ri maya' cholq'ij.

Richin yatz'ib'an pa maya' ajilab'äl k'atzinel nawokisaj k'o qa:

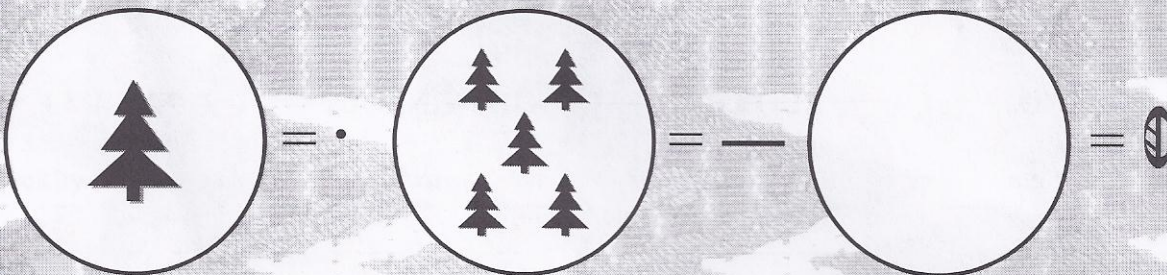
<p><b>a) Oxi' tz'ib':</b></p> <p>☉ re' wa'ix rub'i'</p> <p>• re' tz'uj rub'i'</p> <p>— re' juch' rub'i'</p>	<p><b>ä) Weqkajtz'ik:</b></p> <p>Re' nawokisaj ka'i',</p> <p>oxi', kaji', wo'o',</p> <p>k'a waqi' weq.</p> <p>Wakami xa xe oxi'</p> <p>weq xtawokisaj.</p>	<div style="border-bottom: 1px solid black; height: 30px;"></div> <div style="border-bottom: 1px solid black; height: 30px;"></div> <div style="border-bottom: 1px solid black; height: 30px;"></div>	<p>← Re' q'o'lal weq rub'ini'an.</p> <p>← Re' k'alal weq rub'ini'an.</p> <p>← Re' junilal weq rub'ini'an.</p>
---	--	---	---

## KEJQALEM RI OXI' TZ'IB':

Re jujun tz'ib' re' k'o ka'i' kejqalem, ri ajilejqalem chuqa' ri ajilk'ojlem.

### Ajilejqalem:

Ja ri' ri kan rejqalem ri junjun tz'ib' (ajilab'äl), man jun k'a nb'anon chi nujäl ta ri rejqalem. Tatz'eta' ri tz'etb'äl:



Pa re tz'etb'äl tatz'eta' ri ajilab'äl e tz'ib'atäl ri ntikir el rik'in wa'ix k'a pa b'elejlajuj.

☉	•	••	•••	••••	—	—•	—••	—•••	—••••	==	☉
Wa'ix	Jun	Ka'i'	Oxi'	Kaji'	Wo'o'	Waqi'	Wuqu'	Waqxaqi'	B'eleje'	Lajuj	Julajuj

☉☉	☉☉☉	☉☉☉☉	☉☉☉☉☉	☉☉☉☉☉☉	☉☉☉☉☉☉☉	☉☉☉☉☉☉☉☉	☉☉☉☉☉☉☉☉☉
Kab'lajuj	Oxlajuj	Kajlajuj	Wolajuj	Waq'lajuj	Wuqlajuj	Waqxaqlajuj	B'elejlajuj

### Man tamestaj chi:

- Ri tz'uj xa xe kaji' b'ey tikirel natz'ib'aj pa jun weq.
- Ri juch' xa xe oxi' b'ey tikirel natz'ib'aj pa jun weq.
- Ri wa'ix xa xe tikirel natz'ib'aj jun b'ey pa jun weq.

Pa ri nab'ey weq tikirel natz'ib'aj wa'ix k'a pa b'elejlajuj junilal, xa xe pa ruka'n weq tikirel natz'ib'aj wa'ix k'a b'elejlajuj k'al, ja k'a ri pa rox weq tikirel natz'ib'aj wa'ix k'a b'elejlajuj q'o'.





**Ajilk'ojlem:**

Ja ri rejqalem ri ajilab'äl pa jujun weq ri akuchi' k'o wi. Tatz'eta' re tz'etb'äl:

Nab'ey	Ruka'n	Rox	Rukaj
Rox weq	Wi najoto'ajilaj juk'al pa kamul, nberuya' juq'o'.	1	Jun tz'uj wawe' rejqalem juq'o'
Ruka'n weq	Wi najoto'ajilaj juk'al pa jumul, nb'eruya' juk'al	1	wawe' rejqalem juk'al
Nab'ey weq	Wi najoto'ajilaj juk'al pa memul nb'eruya' jun.	1	wawe' rejqalem jun

Wi natz'ët, ri jujun tz'uj k'o pa jujun weq, kan jujun wi kejqalem, ja k'a la' ri nqab'ij chi re ajilk'ojlem.

**Tasolo' rupam ri kajtz'uk xatz'ët yan kan:**

1. La nab'ey, nub'ij achike weq e k'o wi ri ajilab'äl.
2. La ruka'n, nub'ij jarupe' mul najoto'ajilaj ri ajilab'äl.

Ri memul nuq'ajuj chi man jun mul najoto'ajilaj ta ri ajilab'äl,  
 Ri jumul nuq'ajuj chi najoto'ajilaj jun mul ri ajilab'äl,  
 Ri kamul nuq'ajuj chi najoto'ajilaj pa ka'i' ri ajilab'äl.

3. La rox, nuk'ut chi k'o jun tz'uj pa jujun weq, xa xe jujun wi kejqalem. Ri tz'uj pa nab'ey weq rejqalem jun, la k'o pa ruka'n weq rejqalem juk'al, la k'o pa rox weq rejqalem juq'o'.
4. La rukaj, nuya' rutzijol chawe ri rejqalem jun tz'uj.

**TZ'ETB'ÄL**

**Nab'ey:** tasik'ij üt chuqa' eqal re k'o qa pa xulan, richin ke ri' nq'ax chawäch ri na'oj.

RUB'IXKIL	AJILK'OJLEM	RUSIK'IXIK
Wi najoto'ajilaj juk'al pa jun kamul, nberuya' juq'o'.	.	Juq'o'
Wi najoto'ajilaj juk'al pa waqi' jumul, nb'eruya' waqk'al.	÷	Waqk'al
Wi najoto'ajilaj juk'al pa kab'lajuj memul, nb'eruya' kab'laluj.	≡	Kab'lajuj

Wi nqajilaj ta tra's, nqab'ij k'a ri' chi qachajin juq'o' waqk'al kab'lajuj tra's, nb'eruya' chi tzij chi pa kaxlan nb'eruya' 532 tra's.

**Ruka'n:** tasik'ij ri tz'ib'atel qa pa kaqchikel, rat taya' k'a apo pa ri weqka'jtz'ik ri jarupe nb'eruya' pa maya' ajilab'äl.

- a) Ri ma Xwan k'o juq'o' kab'lajk'al oxi' rujal.

Wakamin tab'na' qa ri weqkajtz'ik, tajuxu' k'a ri juch' qupin raqän.  
 Tatz'ib'aj apo jarupe' q'o' jäl ruchajin ri ma Xwan.  
 Jaru' ta k'a k'al jäl k'o rik'in ri ma Xwan, tatz'ib'aj qa k'a.  
 Janipe' ta k'a junilal jäl k'o rik'in ri ma Xwan, tatz'ib'aj apo k'a.

MAYA' TIONIK





## RI AQ'OMANİK PA MAYA' NA'OJ.

*Xtz'ib'an: Ma Lu'*

*Aj Chi Kōj.*

Pa maya' ch'ob'oj, mayoj, ri wināq xa jun rutz'aqat ronojel ri k'o chuwäch ri ruwach'ulew, ri wināq man ik'owināq ta rejqalem chwäch ronojel ri k'o chwäch ruwach'ulew. Ri ruwäch ri ruwach'ulew xa nik'atzin chi re richin ruk'aslem, achi'el jun awāj, jun chikōp, jun che'q'ayīs, jun ab'āj, xa e rutz'aqat ri ruk'aslem. Ruma k'a ri' nb'ix chi qachaq' qanimal qī', qonojel yojk'atzin qa chi qawäch. Xa ruma wi k'a ri' toq röj winaqi' yeqokisaj ri q'ayīs, ri che', ri ab'āj, ri chikopi' richin aq'omanik.



"Pasüt"

Toq nqab'ij aq'om q'ayīs, nqab'ij chuqa' ri aq'om b'anon rik'in jun ruwäch che', jun q'ayīs, jun chikōp, jun ab'āj, ri ulew, ri ya', ri q'ij, ri kaq'iq', ri q'aq'. Ri ojer kan nkib'ij ri qate' qatata', toq npe jun kiyab'il anināq nkikanoj ri q'ayīs richin nkaq'omaj ki'. Wakami xjalatāj ri na'oj, pa rub'eyal nokisāx ri q'ayīs aq'om, xa ye'okisāx chik kaxlan taq aq'om.

Rokisaxik ri kaxlan taq aq'om k'o nīm k'ayewal ruk'amon pe pa qak'aslem röj winaqi'; k'o re' yerutik pe k'ak'a' taq yab'il pa qach'akul, xa nuq'ät ri qak'aslem chwäch ri ruwach'ulew. K'iy mul nqab'än qa re jun k'utunik re' chi qawäch ¿Achike ruma wakami man k'iy ta chik juna' yek'ase' ri winaqi'? ri ojer taq winaqi' yerijix el, yeyaloj el chwäch ri ruwach'ulew.

K'o jun q'ij xitzijon rik'in ri nan Elisa Chet aj San Juan Sacatepéquez ke re' xutzijoj chwe: "Ri winaqi' wakami man k'iy ta chik kijuna' yek'ase' yekäm el chanin. Ri ojer kan ri winaqi' xa xe nkitij q'ayīs, wakami nk'oje' jun ak'wal ruyon chik aq'omanel (doctor), ja re' nb'anon chi chanin npe ri kamik...". Achi'el nub'ij ri nan k'atzinel ta chi ri nqatij, yojrilij ta, chuqa' nraq'omaj ri yab'il pa qach'akul.

Ri kaxlan aq'om qitzij na wi chanin nuk'owisaj el ruq'axomal ri ach'akul, xa xe k'o k'ayewal nuya' kan pa ach'akul, ruma k'a ri' toq ruk'amon ta xa xe q'ayīs taq aq'om nqokisaj, ruma ri q'ayīs aq'om yojrukunaj chuqa' nuya' ruchuq'a' ri qach'akul.



Ri ajaw ronojel pa rub'eyal rub'anon kan chi qe, e k'o ri q'ayīs, e k'o ri che' ri ruwäch taq che', e k'o ri chikopi', e k'o ri jalajōj kiwäch ab'āj, k'o ri ya', ri q'ij, ri kaq'iq', chi kijujunal k'o rub'eyal ye'okisāx richin aq'omanik. Ri k'ayewal wakami xa ja ri man qetaman ta chik kokisaxik, chuqa' k'o re' xa ja ri yetz'ukun pe ri kaxlan taq aq'om nkitaluj rutzijol chi tiqokisaj ri aq'om kitz'ukun rije'; ruma ri' toq najin nimestāx qa ri rub'eyal ye'aq'oman ri qawinaq.

K'atzinel k'a chi nqaya' rejqalem ronojel ri nqatij chuqa' ri nqaqum, ütztā ri' xa xe ruwäch che', ri jalajōj ruwäch taq ichaj nqatij; ruma k'atzinel chi ronojel ri nqatij yojrilij chuqa' yojrukowirsaj chuwäch ri yab'il.

"kotz'ij aq'om"



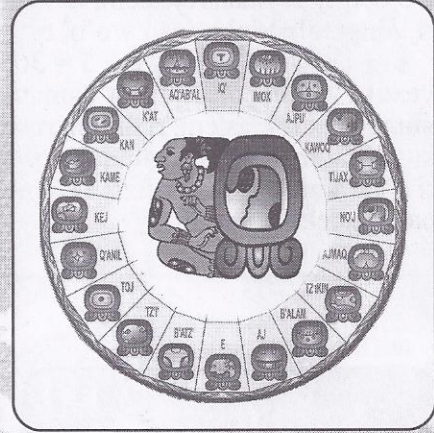


# KIQ'AJARIK RI Q'IJ PA MAYA' CHOLQ'IJ

*Xtz'ib'an: Ma Warkax  
Aj Tz'olojya'*

## RI SOLQ'IJ:

Jun chi ke ri Maya' Cholq'ij ri kan jeb'el xkinük' kan ri qati't qamama', re' ruchajin oxajk'al q'ij, ximon kan rik'in rusutulem nub'an ri qati't ik' chij ri gate' ruwach'ulew, juwinäq peraj ri k'o oxlajuj q'ij kichajin chi kijujunal, chi jujun q'ij ruk'wan rucholajem ri ajilab'al ri nchapatäj rik'in ri jun k'a oxajuj. Ri oxlajuj janila k'a rejqalem pa maya' na'oj, ruma janila ruchuq'a' chuqa' rejqalem pa ruk'aslem jun winäq chuqa' chwäch ri kajulew, pa ruch'akul jun winäq k'o oxlajuj ruq'atq'ay, oxajuj akuchi nusiloj ruch'akul. Par i kajulew e k'o oxaljuj Kaj, oxlajuj motz ch'umila'. Ri solq'ij nuq'ajuj chi ja re' ri nusol ruq'ajarik rub'eyal ruk'aslem jun winäq ruximon k'a ri rik'in ri ch'umila' ruma k'a ri' nb'ix chi jujun winäq k'o ruch'umilal, chuqa' k'o runawal, re jun cholq'ij q'ij nuxim ri' kik'in ch'aqa chik cholq'ij ri xtiqasol qa k'a wakami.



## WAQXAQI' B'ATZ'.



Jun q'ij ri janila rejqalem chupam ri qach'olq'ij, jun utziläj q'ij richin jun winäq nuchäp rupatan rusamaj, ruma k'a ri' ri ajq'ija' nkinimaq'ijuj re jun q'ij re'.chupam ri qawuj ri Maya' Nimab'al K'u'x pa Kaqchikel tinamit ke re' k'a nib'ij:

“ri loq'oläj B'atz': Pa waqxaqi' qitzij tik'il nimasel, nimaläq, cha'on q'ij, ja chuqa' re' rutikirb'al ri Solq'ij, chuqa' ja re' ruq'ij ajq'ij richin nuk'ül rupatan rusamaj, üt'z chuqa' richin natz'uk jun nimasamaj.”

Chupam k'a ri Popol Wuj, nusol chuqa' achike ruma nunimaq'ijux ri Waqxaqi' B'atz', rik'in k'a q'anajäl, saqajäl, b'eleje' k'a ruk'iyab'al xub'an ri Ixmukane', jäl xok kuchuq'a', kiti'ojil, kiq'anal, xwinaqir kiq'a' xewinaqir ri

winaqi', ja re' k'a xkib'an ri Alom, K'ajolom, ri Tepew, Q'uq' Kumätz, xetz'at ri nab'ey qate' qatata', q'anajäl, saqajäl kiti'ojil, ja re' k'a kib'i' ri e nab'ey kaji' qate' e k'aji' qatata': “Kaj Paluna' rub'i' rixjayil ri B'alam K'itz'e', Chomya' rib'i' rixjayil ri B'alam Aq'ab', Tz'ununya' rub'i' rixjayil ri Majukutaj, Kaqixya' rub'i' rixjayil ri ik' B'alam, ruma k'a ri' chuwa'ch re q'ij re' nokisäx q'ojom,

**Ch'umilal B'atz':** rub'i' jun ti chiköp nb'eyaj pa kiwi' ri taq che', ri k'oy, b'ätz' rub'i' ri nokisäx richin nb'an ri kem, jun utziläj q'ij richin nitun chuqa' nxim kik'aslem jun k'ulaj winaqi', yesol yeb'atz'ix, chuqa' jun utzilaj q'ij richin ntikirisäx jun nimasamaj. rub'atz' ri k'aslemal.

Richin nk'oje' ruchuq'a' ri qab'anob'al, k'atzinel chi nqaya' rejqalem re jun q'ij re', ruma nk'ulwachitäj pa oxlajk'al taq q'ij.

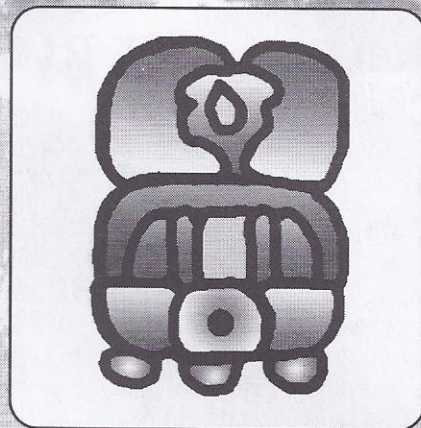
MAYA' B'ANOB'ÄL





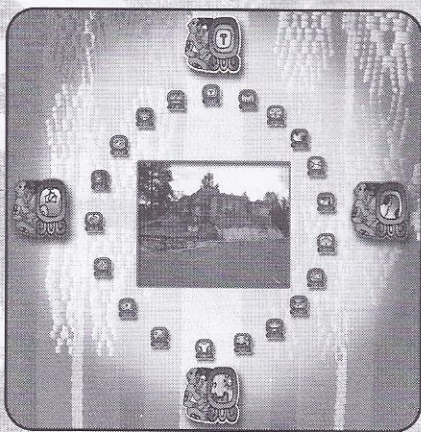
## TZ'APIQ'IJ-WAYEB'

Rub'i' ruk'sib'äl ik' richin ri Cholab', xa xe k'a re' ruchajin wo'o' q'ij ri yalan rejqalem, re wo'o' taq q'ij re' nutz'aqatisaj ri Waqxaqlajk'al winäq wo'o' q'ij richin ri jun juna', (  $\text{||| x} \cdot \text{0} + | = \text{||| |}$  ) ( $18 \times 20 + 5 = 365$ ), nimaläj taq q'ij richin yexuke' yemayon ri qati't qamama', wo'o' taq q'ij richin nmatyoxix ri k'aslem, ri tiko'n, ri taq awäj, q'ij richin nk'utüx kuyub'al mak, ke k'a chuqa' wo'o' taq q'ij richin noyob'ëx ri k'ak'a juna', ruma k'a ri' Tz'apiq'ij nqab'ij chi re, Wayeb' pa yukateko ch'ab'äl.



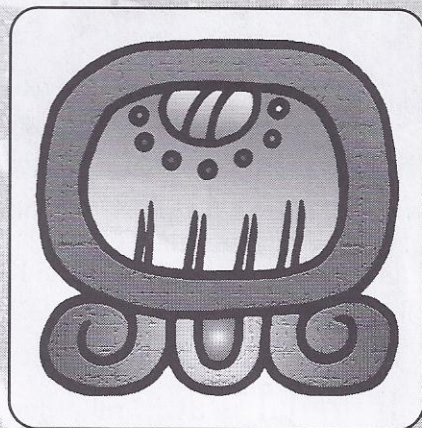
## RI CHOLAB'-AB'

Jun Maya' cholq'ij ri ruchajin waqxaqlajk'al wo'o' q'ij (365), ruma rusutulem nub'an ri qate' ruwach'ulew chi rij ri qatata' q'ij, jun tz'aqät cholq'ij ri xkinuk' kan ri qati't qamama', re jun cholq'ij re' runuk'un ri' pa waqxajlajk'al ik' juwinäq q'ij k'o chupam, ja re' ri kib'i' ri ik' tz'i'b'atäl pa Yukateko ch'ab'äl, ri juna' jantape' nchapatäj el chwäch ri ik'm Pop, Wo, Sip, Sotz', Tek, Xul, Yaxk'in, Mol, Chen, Yax, Saq, Sej, Mak, Kank'in, Mwan, Pax, Kayab', Kumku, chupam re jujun ik' re' e k'o ri juwinäq ch'umilal chupam, xa xe ri ri Wayeb' wo'o' q'ij ruchajin, ri Ab' e k'o kaji' ajch'ame'y ri nkik'waj rub'ey ri jujun juna'; k'o ri Ey, ri N'oj, ri Iq' chuqa' ri Kej, ri ajch'ame'y chupam ri juna' wakami ja ri  $\text{---}$  N'oj, juna' apo ja ri p Iq'. Ja re' ri kib'i' ri ri juwinäq q'ij: N'oj, Tijax, Kawoq, Ajpu', Iq', Aq'ab'al, K'at, Kan, Keme, Kej, Q'anil, Toj, Tz'i', B'atz', Ey, Aj, B'alam, Tz'ikin, Ajmaq.



## KAJI' IMOX, B'ELEJE' K'AT

Kib'i' ruk'isb'äl k'amöl taq b'ey richin ri Kaqchikel tinamit, ri xek'ase' pa Iximche' tinamit, ri Ajpopi' xkijäch kik'aslem pa kiq'a' ri kaxlani' ruma ri' öj k'äs wakami. Nutzijoj ri qawuj Kiwujil Kaqchikela', (Memorial de Sololá) chi ri Ajpop Sotz'il *Kaji' Imox* xujäch ri' ruma xnab'ëx chi ri ja' Ajpop Sotz'il richin ri Kaqchikel Tinamit, ri kaxlani' xekichäp ri k'amöl taq b'ey k'a ri' xejitz'äx. Ruma k'a ri' röj ri kaqchikela' k'atzinel chi yeqanataj kib'i' chuqa' kich'umilal, ruma e ajawa' jantape' e k'o qik'in.



## B'ELEJE' B'ATZ'

Chwäch re q'ij re' nimaq'ijüx kiq'ij ri ixoqi' pa maya' na'oj, ruma b'eleje' ik' nk'oje' pa yab'il jun ixöq toq nalan, ke k'a chuqa' ri' oxlajk'al winäq q'ij ruchajin ri Solq'ij, oxlajk'al winäq q'ij rusutulen ri ik' chi rij ri ruwach'ulew. Ri B'atz' ja ri' rutikirb'al ri k'aslem, ützt ta ri' chi qonojel ta nqaya' ruq'ij re jun nimjaq'ij re' ruma ri Ixöq ja re' ri K'aslem, achike' ri qate' ruwach'ulew.



## KIKOTEMAL PA RUQ'IJ RI QACH'AB'ÄL

*Xtz'ib'an:* Cecilio Tuyuc Sucuc  
*Aj Chi Xot.*

Tiqatzaqa' chi re qach'alal  
tiqaya' rejqalem ri qach'ab'äl  
tiqokisaj ri qach'ab'äl  
kojlok'ok' pa qach'ab'äl, man tiq'ate' qaq'.

Tiqatzaqa' chi re qach'alal  
tiqak'ulu' ri etamab'äl  
pa qach'ab'äl tiqapach'uj ri qana'oj  
man tiqaya' q'ij yojb'enakano' pa qitzij.

Tiqatzaqa' chi re qach'alal  
Kojna'ojin pa qana'oj  
kojsolon pa qaqch'ab'äl pa qana'oj  
tiqapach'uj ri qana'oj pa rub'eyal.

Tiqatzaqa' chi re qach'alal  
kojto'on richin yojk'amon qi'  
yojk'amon ta qi' pa ruwi' qab'anob'al,  
runuk'ulem ri qatinamit  
Manäq ta xtiqatij wayjal, chaqi'j chi'.



Ri 21 de febrero de 2008  
xnimaq'ijux ruq'ij ri qach'ab'äl,  
xb'an jun moloj kik'in tijoxela'

## RI ACH'ALALRI'İL

*Xtz'b'an:* Albina Tzirin Upún  
*Aj Pa Su'm*

Ri wach'alal achi'el  
Jun ch'umil.  
Ri wach'alal achi'el  
Jun kotz'i'j.

Pa ruwi' taq nuq'a'  
Jun ch'umil, jun kotz'i'j  
Wo'o' ruxaq ri xa jun  
Kib'anikil.

## QATI'T IK'

Toq in k'o näj jantape at k'o wik'in  
Xa xe k'a awik'in rat yitzijon wi'  
Nitzijoj chawe' ri nub'is ri nukikotemal  
Rat k'a nakuqub'a' ri nuk'ux toq yib'ison.  
Rat k'a yakikot wik'in toq yikikot.

Majub'ey k'a in aya'on kan  
Xe xe k'a yinaya' kan jun aq'a' ruma ri  
Nkib'ij k'a ri chi xa rijix , k'a ri pa ruka'n q'ij yataläx  
Jub'ey chik, rin wetaman chi at ja rat awik'in  
Jantape yitzijon.





**NUQ'OPOJ**

*Xtz'ib'an: Byron Vinicio*  
*Aj Pa K'im*

Jeb'ël nk'emilan runäq awäch  
Awanima k'o chupam jun k'ixsi'j,  
K'iy kikitom naya' chwe,  
Chwäch ri kaj tz'ib'atal wi ri ab'i'.

Jeb'ël ri ab'i'  
Qitzij chi man xtinmestaj ta  
Yeb'e q'ij; yeb'e q'ij  
Q'ij, q'ij xkatink'uxläj.

**NIMALÄJ JÄB'**

*Xtz'ib'an: Alberta Cali*  
*Aj Chi Xot*

Nimaläj jäh', yalan nım ri aq'ij  
Toq yatoqa' pa ruwi' yojkikot  
Ri jalajöj ta tiko'n, e k'o chuwäch  
Ri qate' ruwach'ulew yalan yetze'en

Janila jun k'alemal ak'amon pe  
Pa ruwi' ri k'ichelaj,  
ruma konojel ri raqen taq ya' yeb'ixan  
yek'iy ri q'ayıs.

Nimaläj jäh' matyox chawe  
Yojkikot, yojtze'en  
Nimaläj jäh'  
Matyox chawe

Nimaläj jäh' nak'iytisay ri tiko'n  
Richin ri qak'alemal pa ruwi'  
Qate ruwach'ulew  
Nım nım ri aq'ij  
Nım nım ri ak'ojlem.

**RI Q'OPOJ**

*Xtz'ib'an: Juan Díaz*

Töq ri in k'o pa b'ey yatintz'ët  
Yatq'ax wukuwik rub'anon ri apo't.  
Kotz'i'j ruwäch ri pas achi'el ri apo't;  
K'o ri kük chuqa' ri tz'unün ri nintz'ët.

Ruma ri' ninwajo' yinok jun tz'unün  
Chi yik'oje'chi runaqaj ak'u'x.  
Käq ri axab' ruma ri' noqa chi nuk'u'x;  
Xinloq' nukäq b'ukut chuqa' jun nutz'nün.

Ri awuq yalan jeb'ël, ruma räx,  
Chuqa' nch'ich'an rupam.  
Q'alaj chi at q'opoj  
Chuqa' ruma ri' ri awuq yalan xäx.

Q'alaj chi at q'opoj, jeb'ël ri aq'otz,  
Ri axoq'ob' ri rukotz'ijal ja ri q'uq'  
Ruma ri' ninna' chi in jun q'uq'.  
Man kinawetzelay, xa xtintz'ub'aj ri aq'otz.

**NIMALÄJ YA'**

*Mirna Imelda Sicajan*  
*Aj Pa Su'm*

Loq'oläj ya'  
jantape yak'atzin pa nuk'aslem  
nım awejqalem, ruma yatqaqum  
e k'iy winaqi' man nkiya' ta chik aq'ij  
rat atya'öl k'aslem wi at manaq ta rat  
manjun k'aslem.

Ruma ri yatqanataj wakami'  
ninmatyoxij chi re ri Ajaw  
ruma atrusipan chi qe röj.





**NUTE'**

( Pach'un tzij )

Nute' nute'  
Achike ruma xab'e yan  
Yatinb'isoj nute'.

Yalan ützi ri ana'oj  
Xaya' kan chi qe'  
Matyox nute' matyox chawe.

Jun tiqaq'ij  
Xatz'apij awäch  
Xab'e jumul rik'in ri AJAW.

Ri k'aslem wakami'  
Man junam ta chik  
Ruma rat at manaq chik.

Jun k'a q'ij man näj ta  
Yatinb'ewila'  
Chi ri' jumul xkik'oje' awik'in.

Nute' nute'  
Achike ruma xab'e yan  
Yatinb'isoj nute'.

*Tz'ib'anel:*  
**Ri ik' ( Pa Sum )**



**TATAQEJ NUTZIJ**

*Xtz'ib'an: Byron Vinicio*

Xa jun nutzij  
Xa jun nuna'oj  
Ninwajo' nya' chawe  
Ninwajo' nb'ij chawe.

Xa ja ri qtinamit nib'ison  
Xa ja ri ruwach'ulew nib'ison  
Ninwajo' nato' jub'a'  
Ninwajo' nataqej qatzij.

Xa jun ak'wal noq'  
Xa jun achi' noq'  
Ninwajo' nato' pa ruk'ayewal  
Ninwajo' yana'ojin pa ruwi'.

Xa ri che' yeqasäx  
Xa ri chikopi' yewitalo'x  
Ninwajo' naya' kiq'ij  
Ninwajo' ye'awilij.

Xa ja ri ch'o'j  
Xa ja ri xajan  
Ninwajo' nakuqub'a' ak'u'x  
Ninwajo' nataqej nutzij.

**LOQ'OLOJ TIJONEL**

*Xtz'ib'an: Armando B. Martín*  
*Aj Tz'olojya'*

Loq'oläj tijonel  
Janila anojib'al k'o  
Chupam ri aq'ij  
Yatinq'ejela' apo.

Nimatyoxij chawe ruma ri ak'utunik  
Nimatyoxij chawe ruma ri apixa'  
Nimatyoxij chawe ruma ri ana'ojib'al  
Nimatyoxij chawe ruma xaya' ri nuq'ij.

Wakami' yin jun ak'wal  
Chuwa'q in jun k'ajol  
Kab'ij yin jun tat  
Janila k'a juna xtiq'ax  
Jantape' xkatink'waj pa nuk'u'x.





## Q'OLOJ

Jub'ey kan jun tixtän xapon chi rochoch ri ruch'utitata', xub'ij chi re:      Nuch'utitata', nuch'utitata'; tasipaj jun maq'uq' chwe richin ninloq' jun nukaxlanway,      ri ruch'utitata' xub'ij chi re rik'in royowal:

     xa xe ruma apwaq nab'ij ch'utitata' chuwe,

ri ti xtän xtze'en xub'ij chi re:

     man ninb'ij ta nuch'utitata' chawe k'a, ninb'ij nuch'utite' chawe k'a.

*Xtz'ib'an: Modesta Taquirá Sicaján  
Aj Pa Su'm*

.. ¿Ak'wal, achike ruma yatoq'?

     Ruma xtzaq ri nutata',

     jAk'wal yalan ützt ana'oj!

     Man kan ta, ruma rija' xzaq chuwij.

*Xtz'ib'an: Tijonel, Felicita Canux Sipac  
Aj Pa Su'm*

...)Ak'wal:

     Nute', nute', taya' lajuj maq'uq' chuwe, richin jun achi nch'o' pa b'ey

Te'ej:

     Achike meb'a' achi nch'o' pa b'ey, Ak'wal:

     Xa jun achi nk'ayin ch'uch' munil (helados)

*Xtz'iba'n: Tijonel Martha Elizabeth Salazar de Equilá  
Aj B'alam Ya'*



## ¿TAWILA'?

Yiniwokisaj rix tijonela'

Yiniwokisaj rix tijoxela'

Yalan yinipitz'ila'

Nikanaj wetal chi re ri ich'akul

Toq yalan yiniwokisaj aninaq yik'is

Jantape' ri nutza'n nutijo' poqon.

¿Tawila' achike rín? \_\_\_\_\_

Öj ka'i'

Yojawokisaj toq yab'in

Yojawokisaj toq yawa'

Yojkikot toq yeqatz'ët ri ixtani'

Man junb'ey xkoj tikir xtiqatun qi'

¿Tawila' achike rín? \_\_\_\_\_

Toq k'a ak'wal na, chikikojol rachib'il nb'e wi yetzaqe al chi rij jun tijonel

K'iy juna' janta pe' kiri' xub'an, eqal xjalataj rub'anikil,

Wakami' chi rij rija' yetzaqal wi jun molaj ak'wala'.

¿Tawila' achike rín? \_\_\_\_\_

Jantape ronojel q'ij yinawokisaj

Yatinusach wi man awetamanta akuchi yab'e wi

Jantape yinkik'utula' wi man ketaman ta akuchi yeb'e wi

Yinok ak chuchi' awochoch jantape' yinepon xa b'a achike na jay nawajo' yab'e wi.

¿Tawila' achike rín? \_\_\_\_\_

Aj b'anöy kem

Jantape yalan jeb'ël, jeb'ël nub'an chi re

Ri rukem nub'an man richin ta rutzyaq

Ri rukem nik'atzin richin nukanoj ruway.

¿Tawila' achike rín? \_\_\_\_\_

*Xtz'ib'an: Armando B. Martín*

*Aj Tz'oloyja'*





# RI TIJONİK PA KA'I' CH'AB'ÄL JALAJÖJ B'ANOB'ÄL

*Xtz'ib'an: Rosalbina Sisimit Peren*

*Aj Chi Xot*

Ri tijonik pa ka'i' ch'ab'äl jalajöj b'anob'äl jun rub'eyal ri tijonem ri nuk'un pa rub'eyal, chuqa' kan wachel, ri nujikib'a' pa rub'eyal jalajöj retamab'al jun winäq. richin chuqa' nutob'ej kejqalen, kib'anikil, kib'anob'al ri jalajoj kiwäch winaqi' e k'o wawe' chi Iximulew, ri ruxe'el re jun na'oj re' richin nok rupam nuk'ulem tijonik, ri nuya' ri to'ik pa ruwi' ri k'ojlemal na'ojib'äl, richin yech'ob'on ri winaqi' pa kikitomal chuq'a pa kib'anob'al, richin k'a nk'oje' ta jun k'aslem pa junamil, junam kich'ojib'äl, jun k'aslem akuchi junam kiq'ij konojel, pa jun molaj winaqirem, jalajoj ch'ab'äl chuqa' jalajoj b'anob'äl.



Ri tijonik pa ka'i' ch'ab'äl, jalajöj b'anob'äl nb'an ruma pa qatinamit e k'o jalajöj taq ch'ab'äl, jalajöj taq b'anob'äl, k'o juk'al wo'o' ch'ab'äl, juk'al maya' ch'ab'äl, ri Garifuna, ri xinka chuqa' ri kaxlan ch'ab'äl, kaji' b'anob'äl; ri kaxlan, ri xinka, ri garifuna chuqa' kaxlan b'anob'äl, ruma k'a ri' k'atzinel k'a ri tijonik pa ka'i' ch'ab'äl ruma pa qab'anob'al röj ri maya' winaqi', ri qati't qamama' kiya'on jun nüm b'eyomal chi qe, pa ruwi' ri jalajöj etamab'äl, re taq na'oj re' rajowaxik nok ruxe'el ri tijonik, chuqa' xtiya'ox ta rejqalem ri k'aslewinäq, xtik'iyir ta xtiya'ox ta ruq'ajarik pa rub'eyal richin ruch'ab'exik rutz'ib'axik ri maya' taq ch'ab'äl, ri garifina chuqa' ri xinka ch'ab'äl richin ta manaq k'ayewal xtikik'ül ri tijonik ri akwala', ri nima'q winaqi', ri akuchi na xtikisol rij kik'aslem chuqa' ruch'ob'ik kich'ojib'äl pa rub'eyal; rik'in re' qonojel k'a xqojilon kan pa jun tik'asäs k'aslemal.

Ri kaxlan tijonik ri nya'öx chi ke ri tijoxela' qawinaq (maya' winäq) pa taq tijob'äl janila k'ayewal oyowal nyatäj pa ruwi' rutijonik, re k'ayewal re' nyatäj kik'in ri tijoxela ri k'a e kokoj na ruma toq yeb'apon pa taq tijob'äl man yekowin ta yech'o pa kaxlan, ruma k'a ri' yejech'ux kan, man ye'ak'axäx ta, janila nikixb'ij ki', ruma ri k'ayewal re' man yetzolin ta chik pa kitijob'al man xtiki ch'äk ta ri jujun rupalb'al ri tijonik. Re jun k'ayewal re' k'a nk'ulwachitäj na pa tijob'äl, e k'o tijob'äl re' ja xkichäp pa rub'weyal rokisaxik ri tijonik pa ka'i' ch'ab'äl, ruma xkitz'ët chi rokisaxik ri nab'ey ruch'ab'äl jun winäq richin rutijonik kan janila k'o nretamaj jun tijoxel chuqa' nuya' q'ij richin ntzijon neh'ob'an pa rub'anob'äl.

Ri k'ak'a rub'eyal tijonik, nusol chi k'atzinel rokisaxik jun maya' ch'ab'äl, chuqa' ri kaxlan ch'ab'äl pa jun runuk'lem ri tijonik, chi ke ri ak'wala' qawinaq chuqa' ri man e qawinaq ta, richin ke ri' nk'oje' jun ch'uch'ul k'aslem, ruma k'a ri' jun winaq wi nuch'ab'ej ka'i' ch'ab'äl k'atzijel juwi' pa ruwi': ruch'abexik, rak'axaxik, rutz'ib'axik, chuqa' rusik'ixik ri ka'i' ch'ab'äl, ri maya' chuqa' ri kaxlan ch'ab'äl.

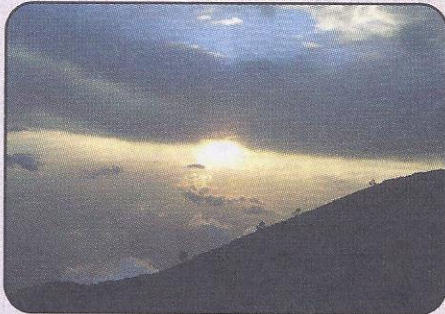
Jun peyonik chi ke konojel ri tijonela' chi xtikik'üt ta pa rub'eyal ri tijonik pa ka'i' ch'ab'äl ruma man jun tzalq'ominem tzij ta. Ri Ruxe'el tijonik Iximulew (CNB) nub'ij chi ri k'atzinel nsamajix ri tijonik pa ka'i' ch'ab'äl, ruma rik'in re jun rub'eyal re' tikirel nb'eq'i'öx ri achike jukib'an kan chupam ri tik'asäs k'aslem, ruma öj k'o chupam tinamit ri neh'ab'ëx k'iy taq ch'ab'äl, chuqa' rajowaxik njalwachix jalajöj taq na'oj pa uxlanib'äl k'u'x.





# RI KAQCHIKEL CHOLCHI'

## RI QASAMAJ



Röj öj pa'äl pa ruwi' runuk'ik ri qach'ab'äl chuqa' ri qab'anob'al, k'o quchuq'a' pa ruwi' ri ruk'iyinem ri qab'anikil, chuqa' richin rupab'axik ri kaqchikel tinamit pa ri na'ojil, pwaqil, winaqirem, b'anob'äl chuqa' ri k'ak'a' taq na'oj richin chi nqaya' ruchuq'a' chuqa' richin xtik'ut ri qab'anikil chuqa' ri qab'anob'al richin chi xtiya'öx ruch'ojikil pa moloj chuqa' pa yonilal richin xtinuk'utäj jun Saqamaq' akuchi e k'o k'iy ch'ab'äl, k'iy qawäch, kiy qab'anob'al.

## RI QATZUB'AL

Qaq'ijun apo chi chupam ri juna' 2,025 pa ruxe'el ri maya' na'oj, ri kaqchikel tinamit xtiril ta runimilem chuqa' ruk'iyilem ri winaq richin chi xtuya' ta q'ij x tub'an jun utziläj nım k'aslem akuchi nrokisaj ri rub'anob'al chuqa' ri ruch'ab'äl, xtiwachin ta pa ch'akonem samaj pa molaj chuqa' pa yonilal, pa jun junawäch Saqamaq' akuchi ri k'aslem k'o rukikotemal, k'o rujunamilem, chuqa' xa jun ta nkib'an chupam ri jalajöj b'anikil b'anob'äl.



Moloj pa ruwi' rutzijol rusamaj ri Kaqchikel Cholchi' kik'in ruwinaq.



Moloj kik'in tijonela' pa ruwi' runuk'ik rupam tijonik.



Runimaq'ijuxik juwinaq rujuna' rub'anon samaj ri kaqchikel Cholchi' pa ruwi' ri qach'ab'äl.



samaj pa talutzij kik'in ch'aqa chik molojri'ıl.



Tijonik pa ruwi' ri qach'ab'äl. "KAQTIJAY".



Moloj pa ruwi' rutzijol Taqonem taq tzij. 65-90 chuqa' ri 19-2003

**"Kaqchikel ri qaxe'el, e kaqchikela' ri qajotay"**